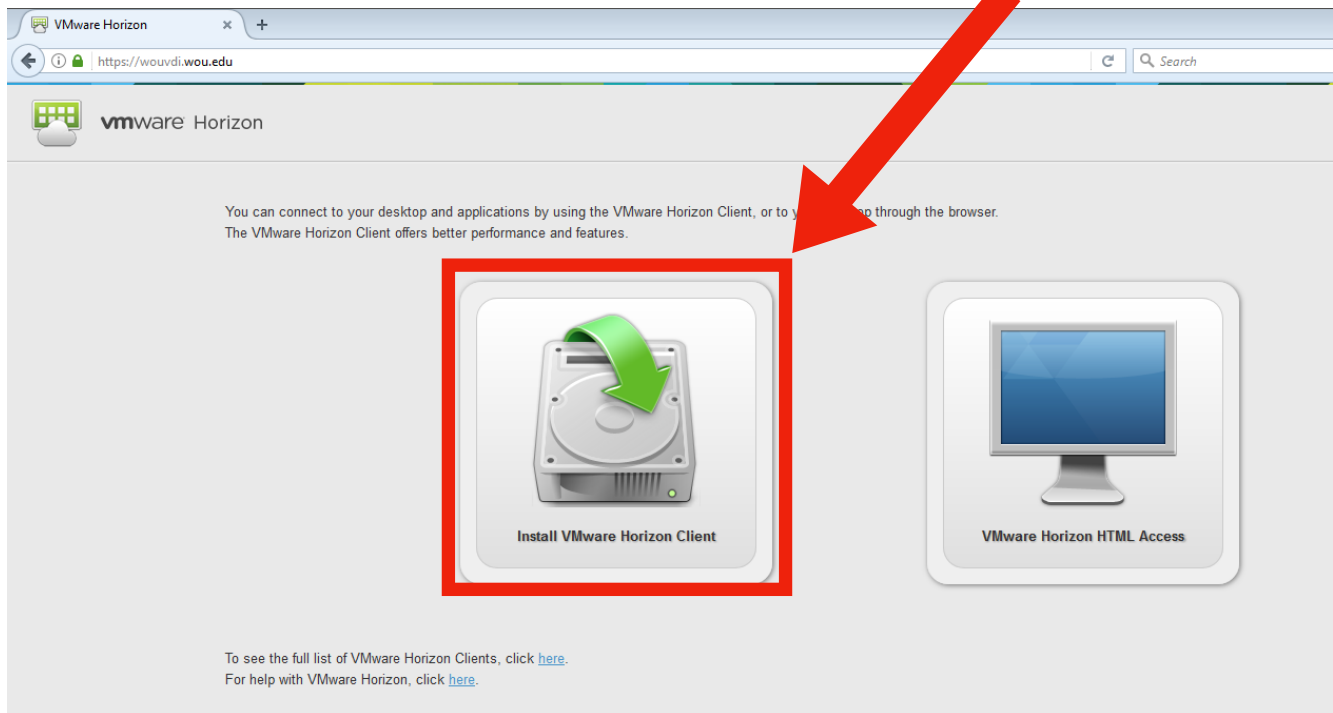


Install VDI Client & Log in to Portal

WARNING: The install **will** require a computer restart!

Step 1: Download the VMware Horizon Client

Open a browser and type wouvdi.wou.edu. Choose "Install VMware Horizon Client"



This will take you to a new page; click the "Go to Downloads" button.

Home / VMware Horizon Clients

Download VMware Horizon Clients

Select Version: VMware Horizon Clients for Windows, Mac, iOS, Linux, and Android allow you to connect to your VMware Horizon virtual desktop from your device of choice giving you on-the-go access from any location.

4.0

[Read More](#)

Product Resources

[View My Download History](#)

[Product Info](#)

[Documentation](#)

[VMware View Mobile Client Privacy](#)

[Horizon View Community](#)

[How to get the Horizon \(with View\) Client for Linux](#)

Product Downloads

Drivers & Tools

Open Source

Custom ISOs

Product

Release Date

VMware Horizon Client for Windows

VMware Horizon Client for Windows

2017-10-03

[Go to Downloads](#)

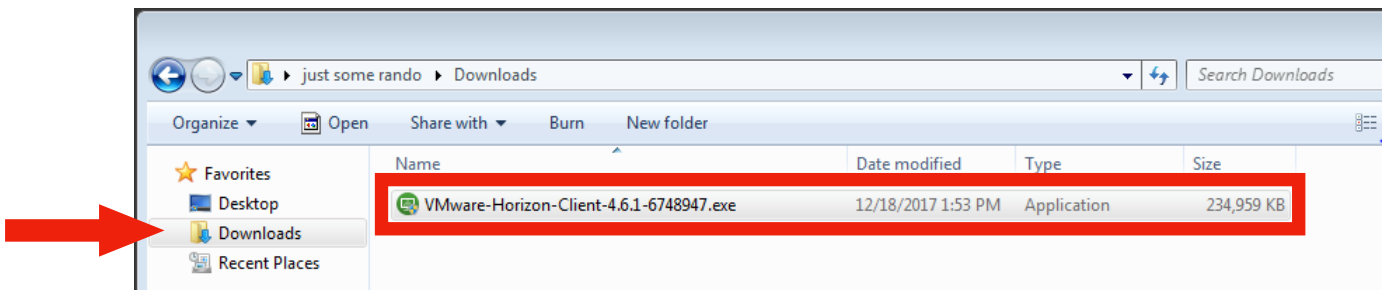
On this new page, click the Download button:



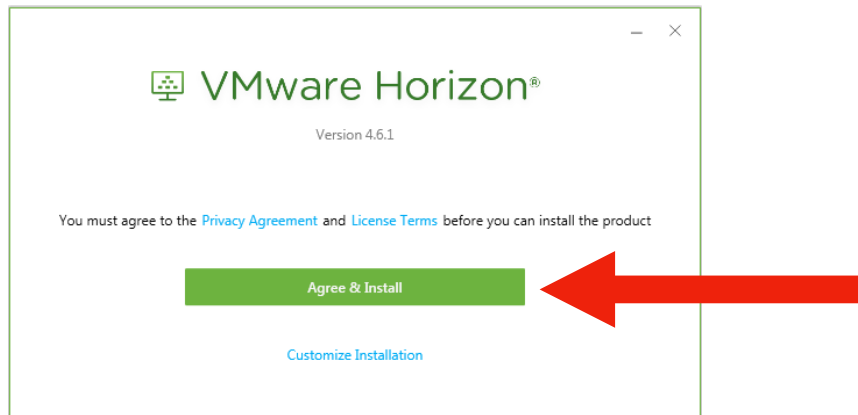
If you get a popup message asking if you want to save the file, click "save file"
IMPORTANT make sure you know where the file is being saved (it will most likely be saved in the folder "Downloads")

Step 2: Install the VMware Horizon Client

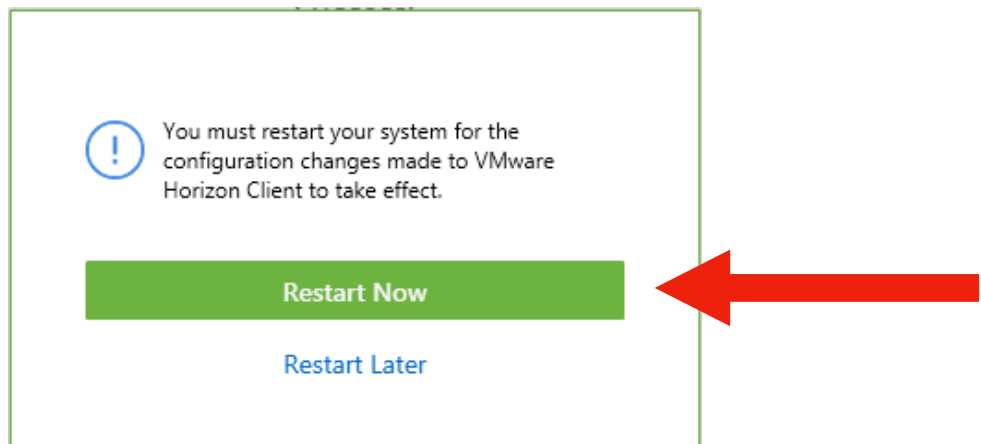
Find the VMware Horizon client .exe (wherever you saved the file in the prior step).
Double click the icon.



A message will appear asking you to agree to the install. Click "Agree"

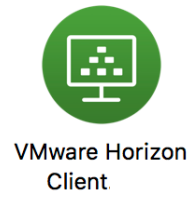


Once the installation is complete, click "Finish" and (in the next window) "Restart Now"

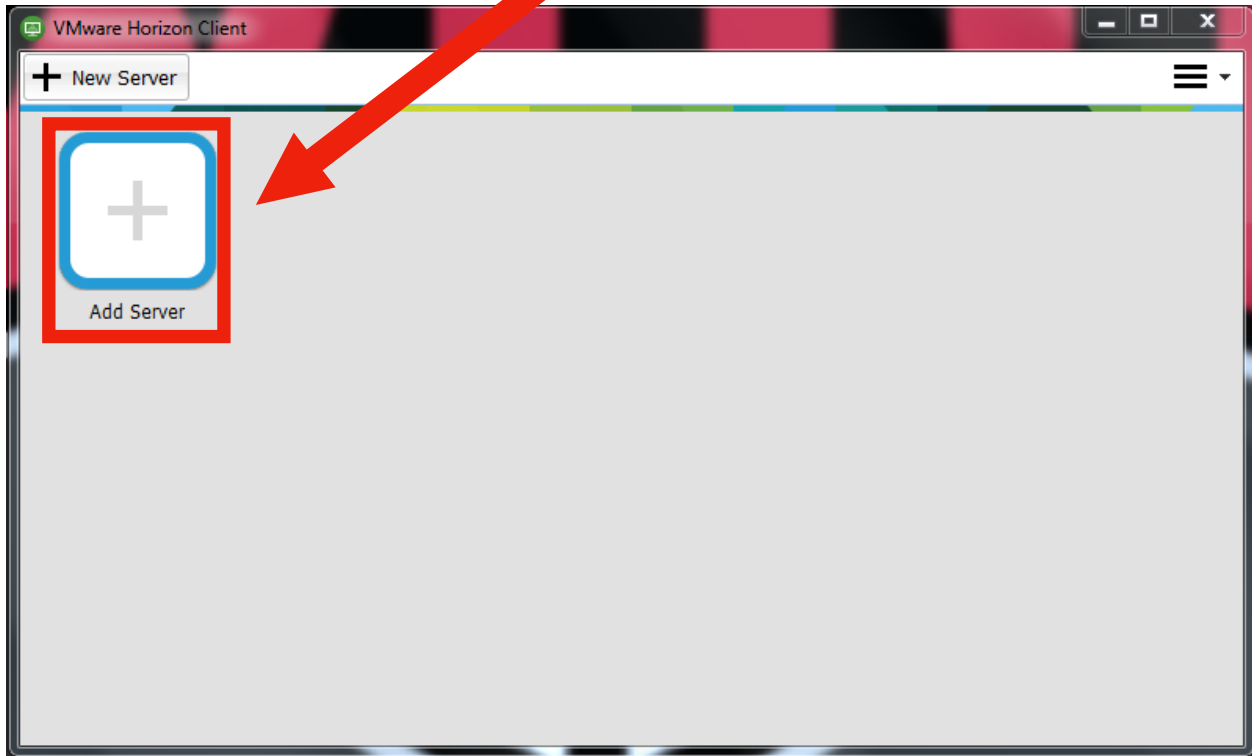


Step 3: Log in to WOU VDI

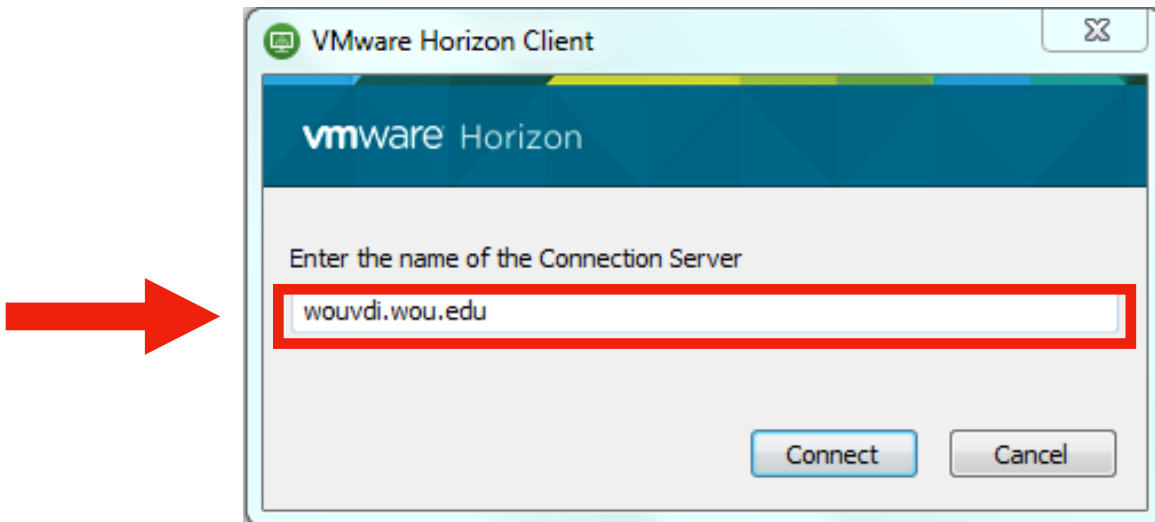
After your computer has restarted, there should be an icon on the desktop for the VMware Horizon Client. Double click on it.



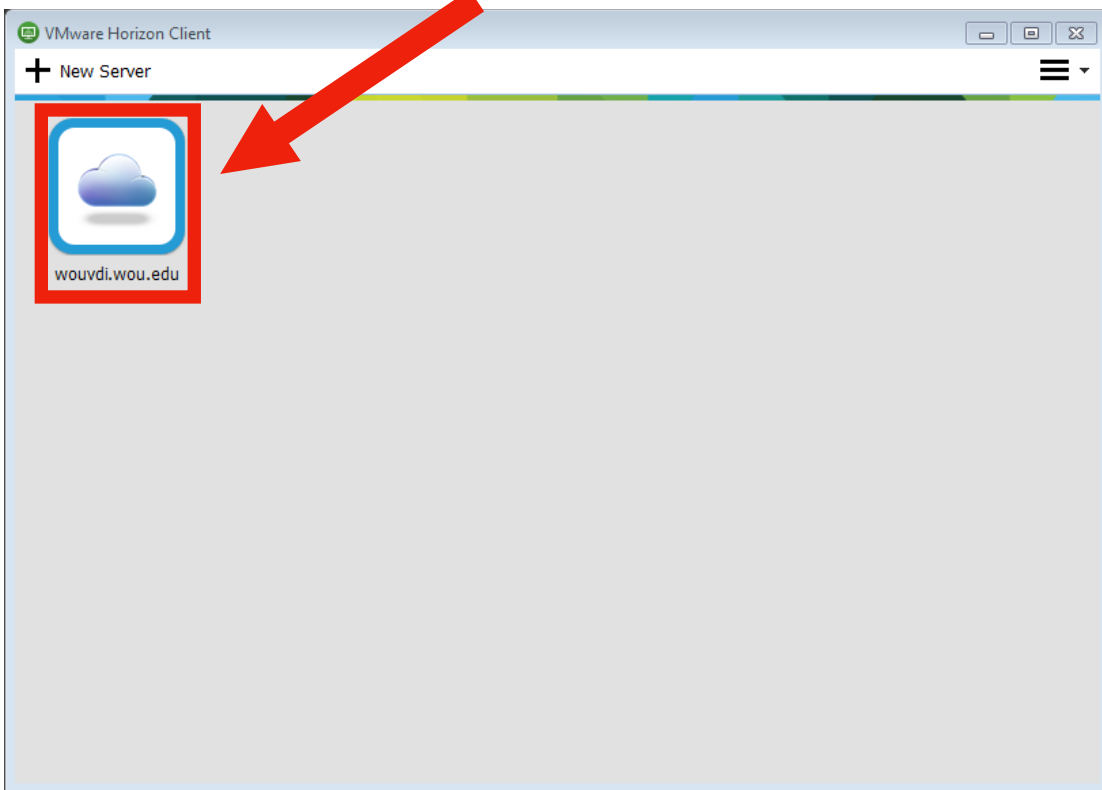
In the popup window, double click "Add Server"



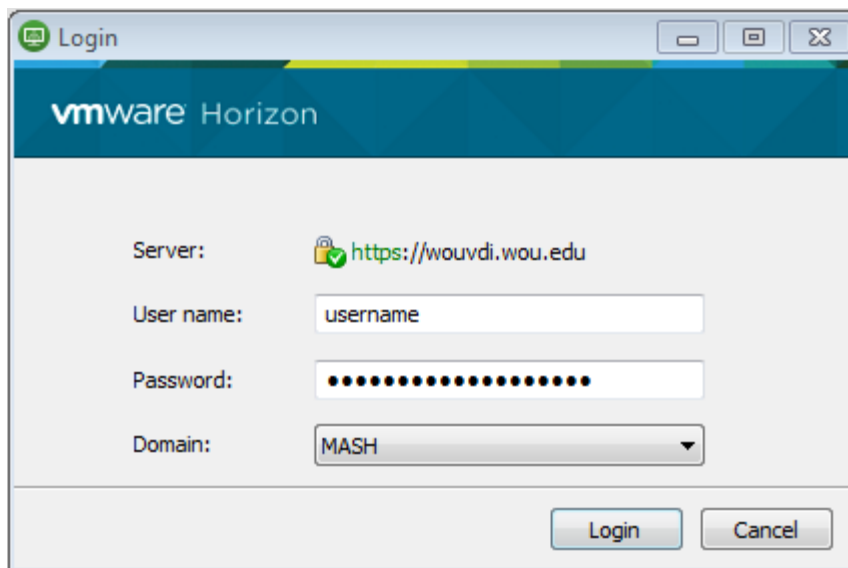
When the new window pops up, enter wouvdi.wou.edu as the Connection Server name, Then click "Connect"



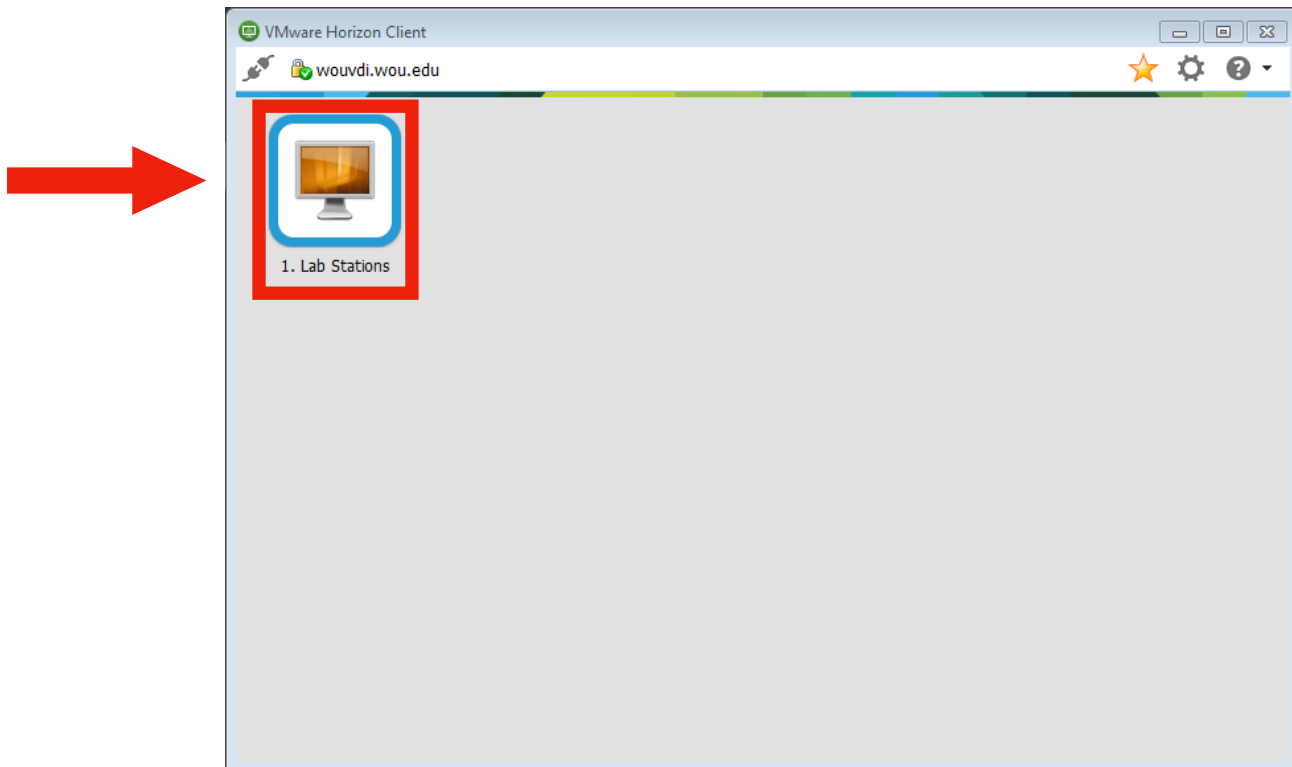
In the new window, choose wou.vdi.wou.edu.



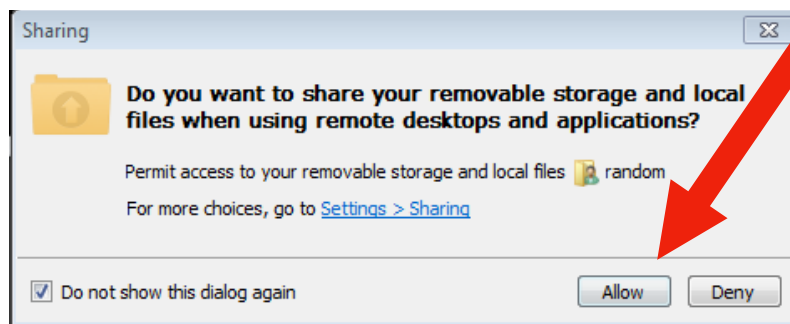
In the popup box, enter your WOU username and password.



Click on "1. Lab Stations"



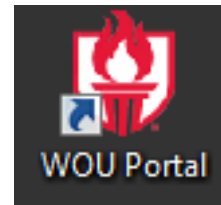
The following window might pop up. Most likely, you will want to choose "Allow"



You are now in the WOU VDI environment :)

Step 4: Log in to WOU Portal

On the desktop, you should see the [WOU Portal](#) icon:
Double click on it.



Once Portal pops up, enter your WOU username and password.

The screenshot shows the WOU Portal 2.0 login interface. At the top left is the Western Oregon University logo. In the center, the word "PORTAL" is written in large red letters with "2.0" in smaller black letters. To the right are two links: "Portal Home" with a lock icon and "WOU Home" with the university logo. Below the header, a message states: "The Portal uses Single Sign-On to give you simple access to most WOU online programs from one customizable menu." Below this is a horizontal dotted line. In the center, there is a red padlock icon with a white paw print inside, and the text "PAW PRINT" in red. To the right of the padlock are two input fields: "Username: username" and "Password: ●●●●●●●●●●". Below the password field is a "Login" button. At the bottom of the main content area, a message reads: "Setting your password with [Account Lookup](#) will synchronize all accounts accessed through the Portal." The footer contains contact information: "University Computing Services | phone: 503-838-8925 | email: [UCS Service Request Desk](#) | [Text only](#)" and a copyright notice: "© 2017 [Western Oregon University](#)".

Congrats! You're now logged into WOU systems! :)